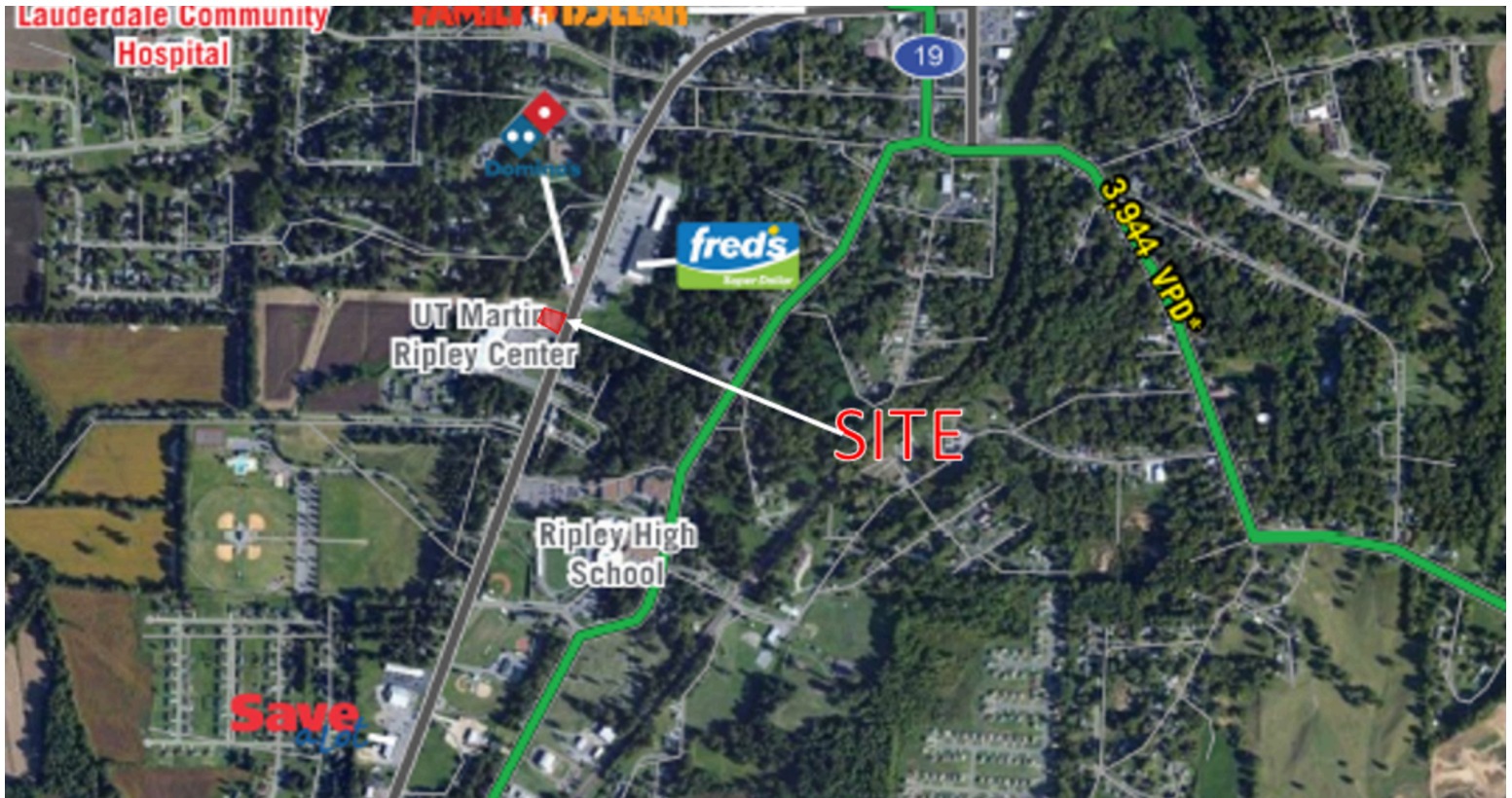


# S Washington St.

S Washington St, Ripley, TN 38063  
 Lauderdale County County I Washington St.



## HIGHLIGHTS

For Sale  
 County: Lauderdale County  
 Type: Commercial  
 Total SF: 4,286  
 Year Built: 1975

## CONTACT

Susan Worlds  
 731-635-9541  
 sworlds@lauderdalecountyttn.org

## RETAILERS INCLUDE



- Freestanding building located directly in front of UT Martin Ripley Center available for sale
  - Building size: 4,286 SF
  - UT Martin: Educational outreach teaching center
  - Students: 300 Students enrolled per year
- This site features high visibility from S. Washington St.
  - VPD: 7,644
- The building site is located on 1.13 acres with parking and drive-thru access.
- The site is located approximately 2 miles Southwest of Lauderdale Community Hospital
  - Facility: 25-Bed critical access hospital providing high-quality care
- Ripley, TN is located 45 Miles Northeast of Memphis and approximately 175 Miles Southwest of Nashville, TN

## DEMOGRAPHICS

	3 MILE	5 MILE	10 MIN
Population	8,883	13,604	10,850
Daytime Population	11,372	13,923	12,959
Households	3,337	5,142	4,122
Median Household Income (\$)	29,594	31,730	30,626
Average Age	37	38	37



# S Washington St.

S Washington St, Ripley, TN 38063  
Lauderdale County County | Washington St.



Retailer in Area UT Martin

1 Available