

KINGSTON SPRINGS, TENNESSEE

Market Guide

kingstonsprings.net

City Contact Information



John Lawless

Assistant City Manager

jlawless@kingstonsprings-tn.gov

(615) 952-2110 ex. 15

kingstonsprings.net

Demographics

(10 Minute Drive Time)



Average Age
40.4



Median Household Income
\$65,536



Growth Rate
0.99%

Peer Analysis

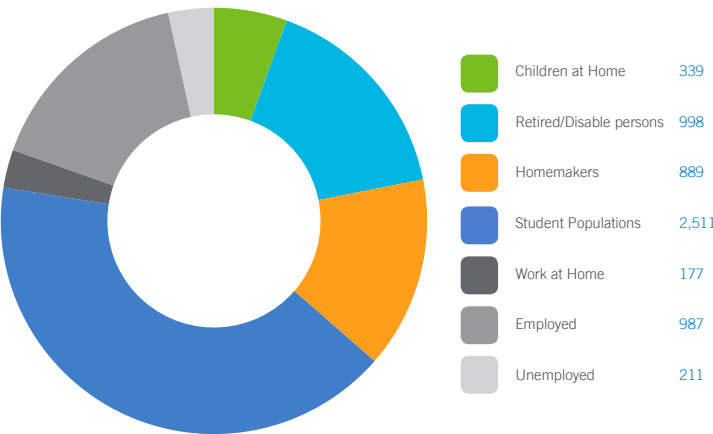
The Peer Analysis, built by Retail Strategies along with our analytics partner (Tetrad), identifies analogue retail nodes within a similar demographic and retail makeup. The Peer Analysis is derived from a 5 or 10 minute drive time from major comparable retail corridors throughout the country. The variables used are population, income, daytime population, market supply and gross leasable area. The following are retail areas that most resemble this core city:

Peer Trade Areas

Cross Plains, TN	7830 Hwy 25 E
New Market, AL	4991 Winchester Rd
Pegram, TN	316 Highway 70
Odenville, AL	120 Council Blvd
Gladeville, TN	8702 Stewarts Ferry Pike #101
Ashland City, TN	7507 Old Clarksville Pike

Daytime Population 6,112

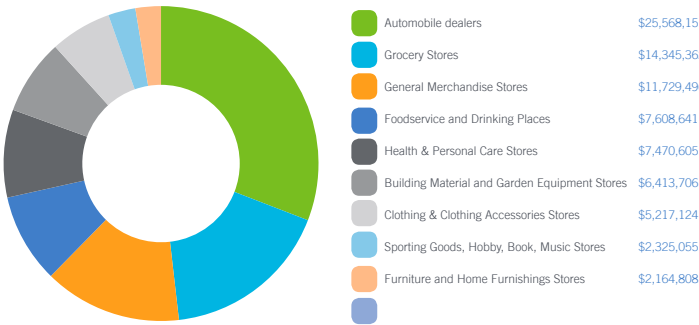
(10 Minute Drive Time)



GAP Analysis \$82,842,948

(Custom Trade Area)

The Gap Analysis is a summary of the primary spending Gaps segmented by retail category. It measures actual consumer expenditures within the City's trade area and compares it to the potential retail revenue generated by retailers in the same area. The difference between the two numbers reflects leakages, or the degree to which consumers travel outside the community for certain retail goods and services. The Gap analysis is a useful tool to gauge retail supply and demand within the community.



Focus Categories

The top categories for focused growth in the municipality are pulled from a combination of leakage reports, peer analysis, retail trends and real estate intuition. Although these are the top categories, our efforts are inclusive beyond the defined list.

Let us know how we can help you find a site!



Restaurants



Grocery



Health & Wellness



General Merchandise

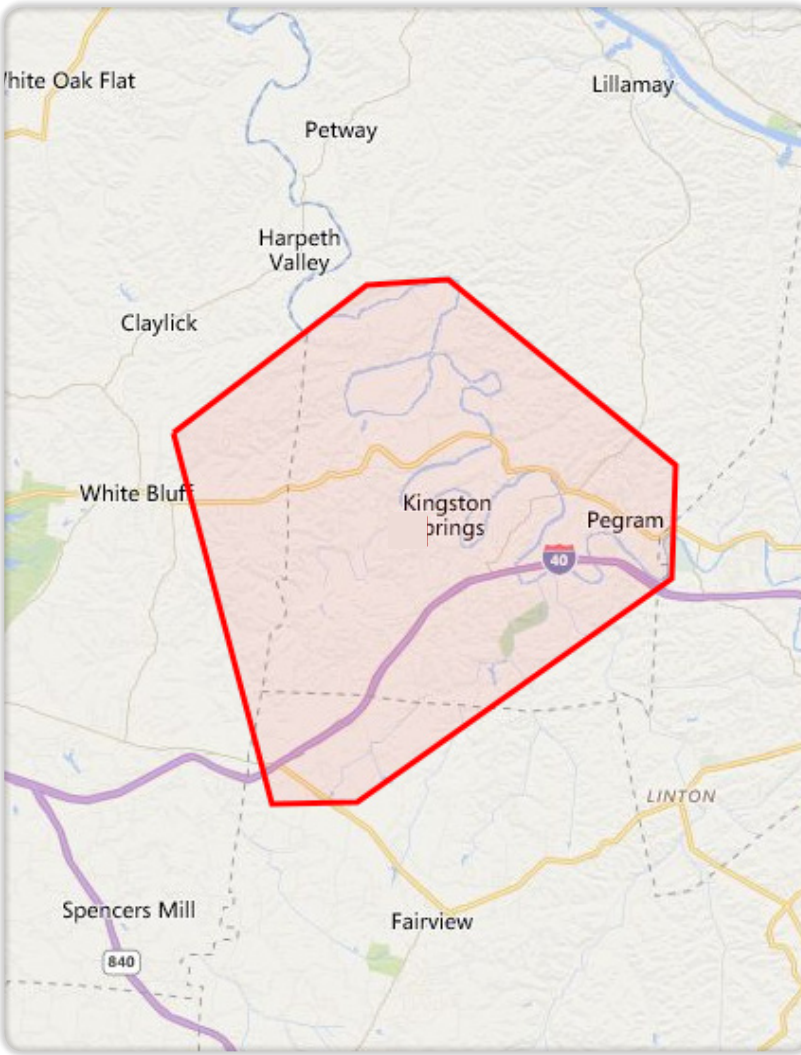
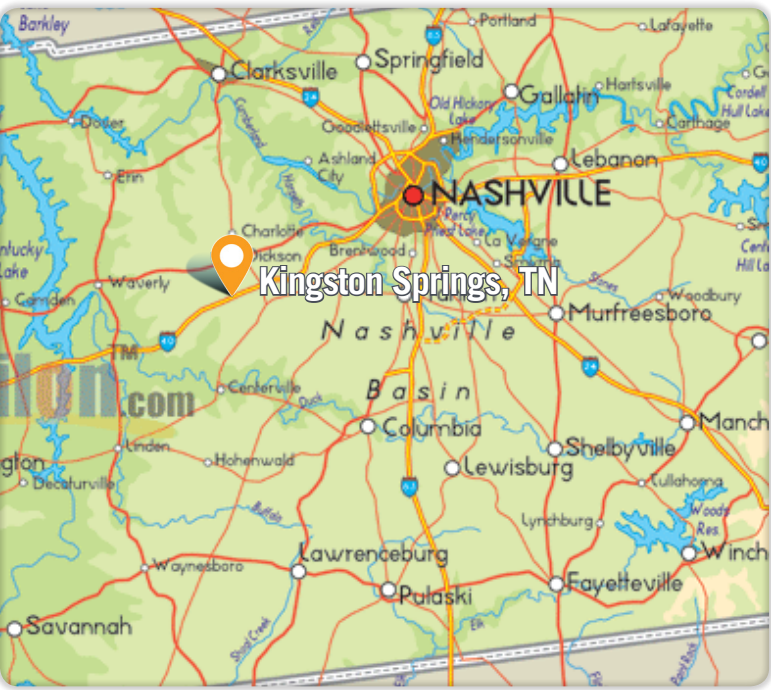


DEMOGRAPHIC PROFILE

	3 Mile Radius	5 Mile Radius	10 Mile Radius
2016 Estimated Population	5,802	10,278	66,821
Daytime Population	4,663	6,754	38,474
Median HH Income	\$64,856	\$62,990	\$64,124
Number of Households	2,176	3,894	27,106

	5 Minute DT	10 Minute DT	15 Minute DT
2016 Estimated Population	2,089	7,729	45,759
Daytime Population	2,155	6,112	32,026
Median HH Income	\$67,977	\$65,536	\$61,637
Number of Households	785	2,917	20,179

*Source: STI PopStats



Follow us!

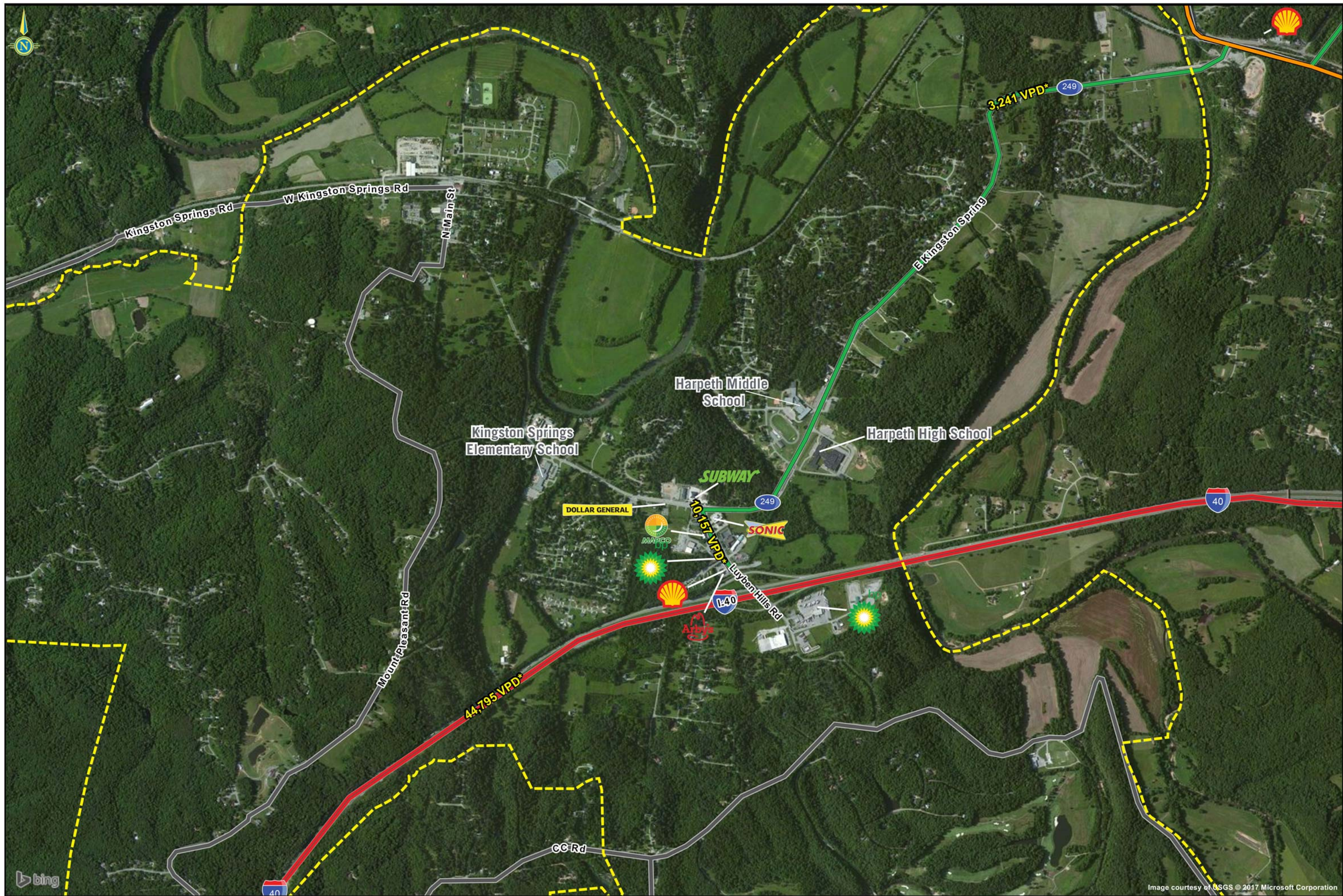


Image courtesy of USGS © 2017 Microsoft Corporation

KINGSTON SPRINGS, TENNESSEE

Major Retail & Restaurants