

LEXINGTON, TENNESSEE

Market Guide

lexingtontn.gov

City Contact Information



Kimberly Douglas
Executive Director

City of Lexington
33 First Street
Lexington, TN 38351

731.968.6657 office

lexingtontn.gov

Demographics



Average Age
39.5



Median Household Income
\$36,877

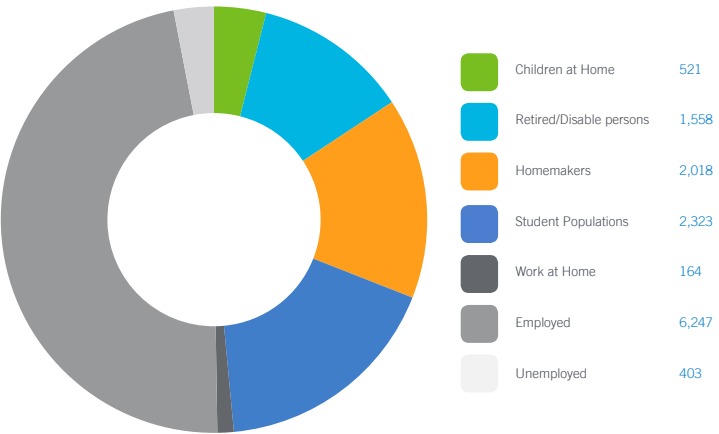


Number of Households
4,429

Major Employers & City Information

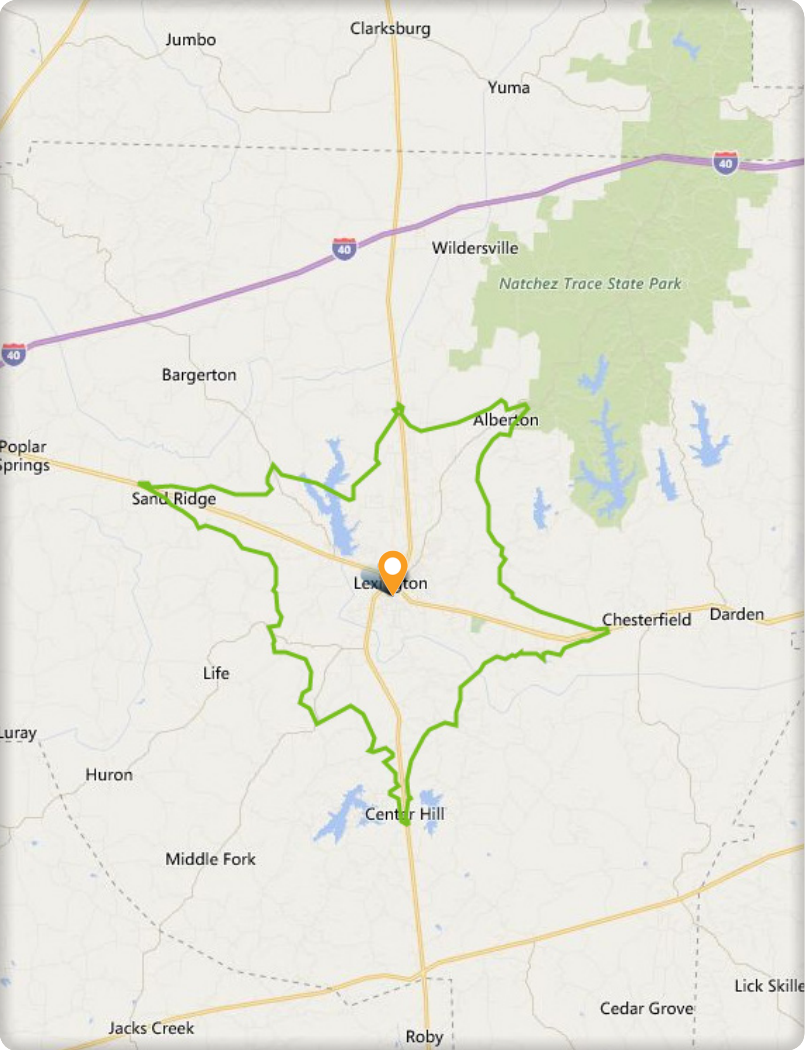
Company Name	Employees
Autozone Distribution Center	399
Fluid Routing Solutions	352
York Enterprises	302
Leroy Somer	300
Young Touchstone	170
Volvo Penta Marine	140
Henderson County Community Hospital	145
Lexington City School System	140
Lexington Healthcare & Rehabilitation	132
NCI Building Systems	132
Falcon Plastics	62
Cooper Container	45
MIG Steel Fabrication	40

Daytime Population 13,234 (10 Minute Drive Time)



GAP Analysis \$39,756,655 (15 Minute Drive Time)

The Gap Analysis is a summary of the primary spending Gaps segmented by retail category. It measures actual consumer expenditures within the City's trade area and compares it to the potential retail revenue generated by retailers in the same area. The difference between the two numbers reflects leakages, or the degree to which consumers travel outside the community for certain retail goods and services. The Gap analysis is a useful tool to gauge retail supply and demand within the community.

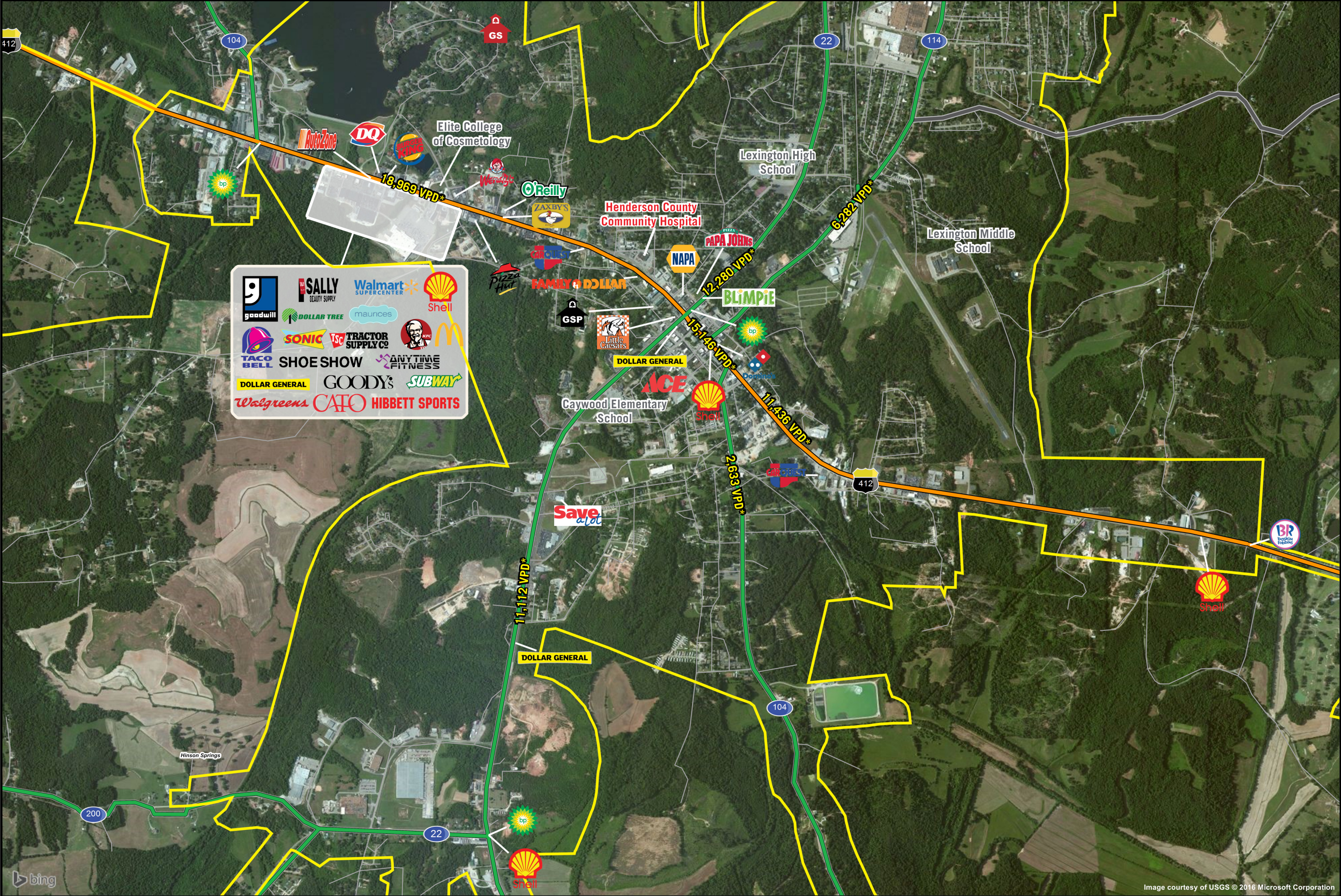


DEMOGRAPHIC PROFILE	3 Mile Radius	5 Mile Radius	10 Mile Radius
2015 Estimated Population	8,880	12,326	21,277
Daytime Population	12,462	14,409	18,626
Median HH Income	\$36,253	\$36,475	\$37,993
Number of Households	3,675	5,077	8,599

DEMOGRAPHIC PROFILE	5 Minute Drive Time	10 Minute Drive Time	15 Minute Drive Time
2015 Estimated Population	6,117	10,780	15,371
Daytime Population	10,909	13,234	16,008
Median HH Income	\$33,335	\$36,877	\$37,758
Number of Households	2,570	4,429	6,300

*Source: STI PopStats





LEXINGTON, TENNESSEE

Major Retail & Restaurants