

RIPLEY, TENNESSEE

Market Guide

lauderdalecountyttn.org

City Contact Information



Susan Worlds, IOM

Lauderdale Chamber/ECD
123 South Jefferson St.
Ripley, TN 38063

731.635.9541 office

lauderdalecountyttn.org

Demographics



Average Age
36.7



Median Household Income
\$28,417



Number of Households
4,244

Major Employers & City Information

Company Name Employees

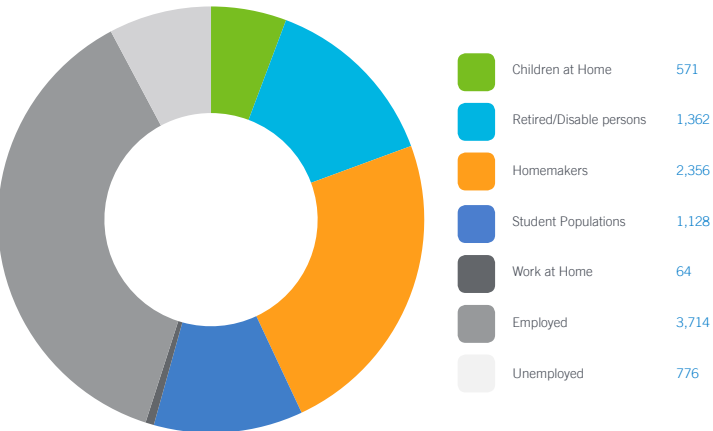
Lauderdale County Board of Education	721
West Tennessee State Penitentiary	625
Marvin Windows	466
SRG Global	406
Komatsu	330
Pierce Distribution	280
VF Imagewear	175
Lauderdale Community Hospital	177
Walmart	164
American Greetings	105
Royal Group	68

We are home to the World Famous Ripley Tomatoes.

Ripley/Lauderdale County is one of the greatest communities not only in West Tennessee but “Best Tennessee”.

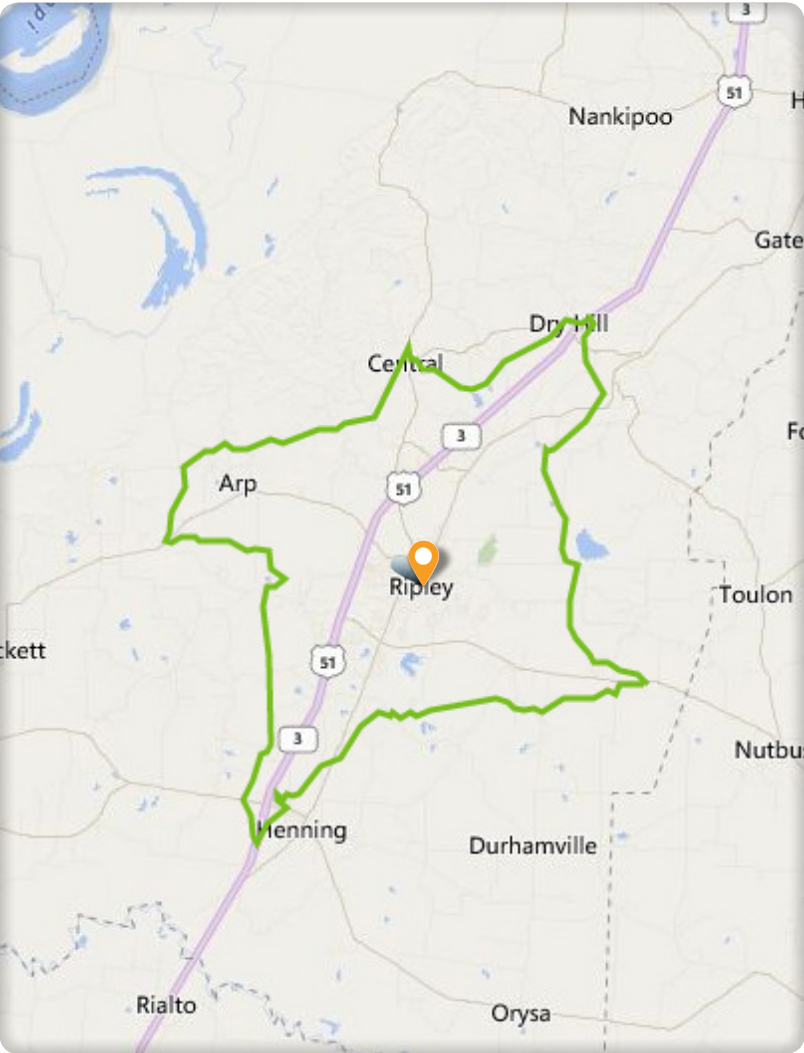
Lauderdale County is prospering and growing. We are very proud of our growing economic base, high-achieving schools, blossoming arts community, progressive health services, and award-winning parks system.

Daytime Population 9,971 (10 Minute Drive Time)



GAP Analysis \$25,271,810 (10 Minute Drive Time)

The Gap Analysis is a summary of the primary spending Gaps segmented by retail category. It measures actual consumer expenditures within the City's trade area and compares it to the potential retail revenue generated by retailers in the same area. The difference between the two numbers reflects leakages, or the degree to which consumers travel outside the community for certain retail goods and services. The Gap analysis is a useful tool to gauge retail supply and demand within the community.



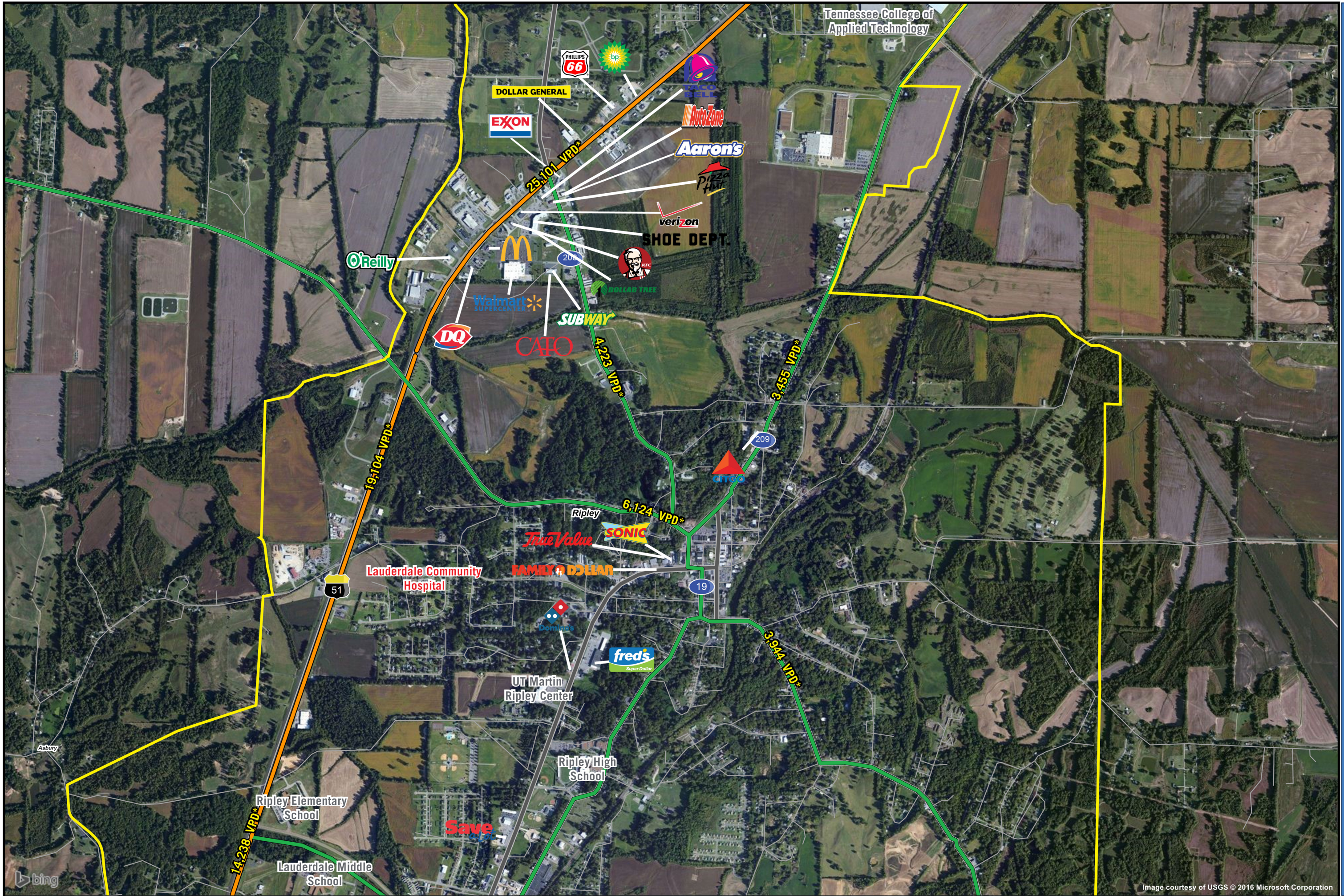
DEMOGRAPHIC PROFILE	3 Mile Radius	5 Mile Radius	10 Mile Radius
2015 Estimated Population	9,339	13,820	21,652
Daytime Population	8,846	11,222	15,577
Median HH Income	\$27,224	\$29,903	\$32,076
Number of Households	3,521	5,227	8,297

DEMOGRAPHIC PROFILE	5 Minute Drive Time	10 Minute Drive Time	15 Minute Drive Time
2015 Estimated Population	5,699	11,183	16,877
Daytime Population	6,604	9,971	13,001
Median HH Income	\$22,218	\$28,417	\$31,013
Number of Households	2,128	4,244	6,433

*Source: ST1 PopStats



Follow us! [in](#) [ig](#) [f](#) [t](#)



RIPLY, TENNESSEE

Major Retail & Restaurants